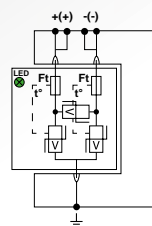
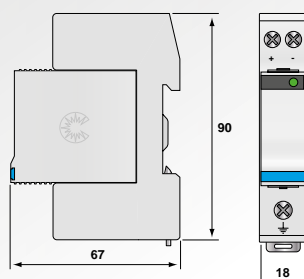


DC power surge protector DS210-xxDC series

**Imax
2-6 kA**



DS210-24DC



V: Varistor
Ft: Thermal fuse
t°: Thermal disconnection system
LED : Disconnection indicator

- Surge protector for DC or PV supplies
- From 12 to 130V
- Discharge currents : I_{max} : 2 to 6 kA
- Operating indicator
- Pluggable module
- EN 61643-11, CEI 61643-11 and UL1449 ed.4 compliance

DS210-**xxx**DC

Nominal DC voltage

Characteristics

CITEL Model	DS210-12DC	DS210-24DC	DS210-48DC	DS210-75DC	DS210-95DC	DS210-110DC	DS210-130DC
Description	DC or PV power surge protector						
Network	12 Vdc	24 Vdc	48 Vdc	75 Vdc	95 Vdc	110 Vdc	130 Vdc
Connection mode	+/-/PE	+/-/PE	+/-/PE	+/-/PE	+/-/PE	+/-/PE	+/-/PE
Protection mode(s)	CM/DM	CM/DM	CM/DM	CM/DM	CM/DM	CM/DM	CM/DM
Max. DC operating voltage	U _c 15 Vdc	30 Vdc	56 Vdc	85 Vdc	100 Vdc	125 vdc	150 Vdc
Max. AC operating voltage	U _c 10 Vac	15 Vac	40 Vac	60 Vac	75 Vac	95 Vac	115 Vac
Residual current <i>- Leakage current at U_c</i>	I _{pe} < 0.1 mA	< 0.1 mA	< 0.1 mA	< 0.1 mA	< 0.1 mA	< 0.1 mA	< 0.1 mA
Max. Load current <i>(if connection serie)</i>	I _L 20 A	20 A	20 A	20 A	20 A	20 A	20 A
Nominal discharge current <i>- 15 x 8/20 μs impulses</i>	I _n 1 kA	1 kA	2 kA	2 kA	2 kA	2 kA	2 kA
Max. discharge current <i>- max. withstand @ 8/20 μs by pole</i>	I _{max} 2 kA	2 kA	6 kA	6 kA	6 kA	6 kA	6 kA
CM Protection level @ I _n	U _p 85 V	105 V	180 V	250 V	300 V	350 V	400 V
Associated disconnectors							
Thermal disconnector	internal						
Fuses (if needed)	Fuses type gG- 10 A						
Mechanical characteristics							
Dimensions	see diagram						
Connection to Network	by screw terminals: 1.5-10mm ² (actives wires) and 2.5-25mm ² (ground)						
Disconnection indicator	Green led off						
Spare unit	DSM210-12DC	DSM210-24DC	DSM210-48DC	DSM210-75DC	DSM210-95DC	DSM210-110DC	DSM210-130DC
Mounting	Symmetrical rail 35 mm (EN60715)						
Operating temperature	-40/+85°C						
Protection rating	IP20						
Housing material	Thermoplastic UL94-V0						
Standards compliance	IEC 61643-11 / EN 61643-11 / UL1449 ed.4						
Part number	440201	440301	440401	440601	441001	440901	440602

