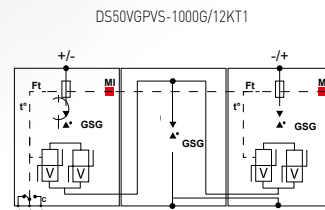
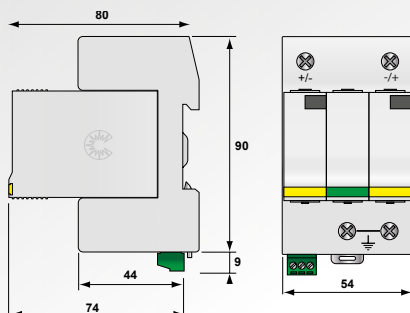


Type 1+2 PV Surge Protector D50xxPV-G/12KT1



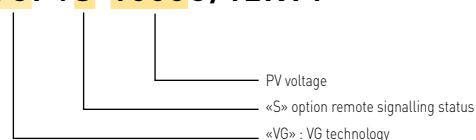
DS50VGPV-1000G/12KT1



GSG: Gas-filled spark gap
V: High energy MOV
Ft: Thermal fuse
t°: Thermal disconnection mechanism
C: Contact for remote signal
MI: Disconnection indicator

- Type 1+2 Surge Protector for Photovoltaic
- for 1000 and 1250 Vdc PV voltage
- Impulse currents I_{imp}/I_{total} : 6.25/12.5 kA @ 10/350µs
- Common Mode and Differential protection
- Remote Signaling (option)
- Plug-in modules
- EN 50539-11 compliance

DS50VGPVS-1000G/12KT1



Characteristics

CITEL Model	DS50VGPV-1000G/12KT1	DS50PV-1000G/12KT1	DS50PV-1500/12KT1
Description	Type 1+2 PV surge protector		
Network	Uocstc PV network 1000 Vdc	PV network 1000 Vdc	PV network 1250 Vdc
Protection mode(s)	CM/DM	CM/DM	CM/DM
Max. PV operating voltage	Ucpv 1200 Vdc	1200 Vdc	1500 Vdc
Current withstand short circuit PV	Iscpv 15000 A	15000 A	15000 A
Permanente operating current - Leakage current at Ucpv	Icpv None	< 0.1 mA	< 0.1 mA
Residual current - Leakage current at Ucpv	Ipe None	None	< 0.1 mA
Follow current	if None	None	None
Nominal discharge current - 15 x 8/20 µs impulses	In 15 kA	15 kA	15 kA
Max. discharge current - max. withstand @ 8/20 µs by pole	Imax 40 kA	40 kA	40 kA
Impulse current by pole - max. withstand 10/350µs	Iimp 6.25 kA	6.25 kA	6.25 kA
Total lightning current - max. total withstand @ 10/350 µs	Itotal 12.5 kA	12.5 kA	12.5 kA
Total Maximal discharge current - max. total withstand @ 8/20 µs	Imax total 60 kA	60 kA	60 kA
Protection level CM/DM @In (8/20µs) and @ 6kV (1.2/50µs)	Up 2.8/5.1 kV	2.6/4.6 kV	5.3/5.3 kV
Associated disconnectors			
Thermal disconnector	internal		
Fuses	without		
Mechanical characteristics			
Dimensions	see diagram		
Connection to Network	Screw terminals: 2.5-25mm ²		
Disconnection indicator	2 mechanical indicators		
Remote signaling of disconnection	Option DS50VGPVS-1000G/12KT1 - output on changeover contact	Option DS50PVS-1000G/12KT1 - output on changeover contact	Option DS50PVS-1500/12KT1 - output on changeover contact
Mounting	Symmetrical rail 35 mm (EN60715)		
Operating temperature	-40/+85°C		
Protection rating	IP20		
Housing material	Thermoplastic UL94-V0		
Standards compliance	EN50539-11		
Part number	-	-	-

