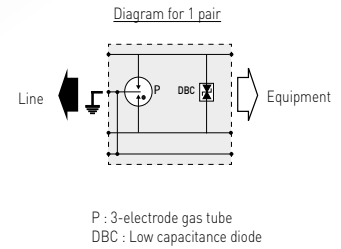
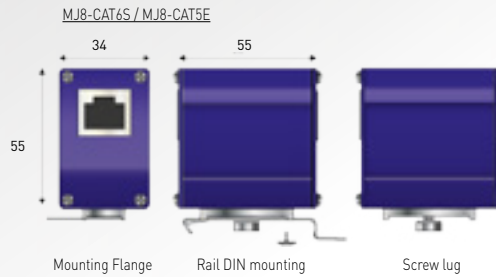
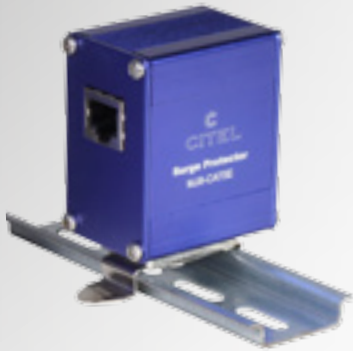


Data Surge Protectors

MJ8 series



- 100M/1G/ 10Gigabit Ethernet compatible
- RJ45 connectors
- Bi-directional
- Mounted on frame or DIN rail
- IEC 61643-21, EN 61643-21 and UL497B compliance

Characteristics

CITEL Model	MJ8-CAT6S	MJ8-CAT5E
Description	RJ45 surge protector for Category 6 network	RJ45 surge protector for Category 5E network
Network	10Gigabit Ethernet câblage Cat.6	Gigabit Ethernet câblage Cat.5E
Max. data rate	10 Gbps	1 Gbps
SPD configuration	4 pairs + shielded	4 pairs + shielded
Pin outs	(1-2)(3-6)(4-5)(7-8)	(1-2)(3-6)(4-5)(7-8)
Nominal line voltage	Un 5 Vdc	5 Vdc
Max. DC operating voltage	Uc 8 Vdc	8 Vdc
Max. Load current	IL 1000 mA	1000 mA
Max. frequency	f max > 250 MHz	> 100 MHz
Insertion loss	< 1 dB	< 1 dB
Line/Ground Nominal discharge current <i>8/20µs Test x 10 - category C2</i>	In 2000 A	2000 A
Nominal discharge current Line/Line <i>8/20µs Test x 10 - category C2</i>	In 500 A	500 A
Impulse current - <i>2 x 10/350µs Test - D1 Category</i>	limp 500 A	500 A
Protection level	Up 20 V	20 V
Failsafe behavior	Short-circuit	Short-circuit
Mechanical characteristics		
Dimensions	see diagram	
Format	RJ45 connector	
Connection to Network	RJ45 shielded connector female input/output	
Disconnection indicator	transmission interrupt - default mode 2	
Mounting	Mounting flange, Screw lug, DIN Rail	
Operating temperature	-40/+85°C	
Protection rating	IP20	
Housing material	Aluminium	
Standards compliance	IEC 61643-21 / EN 61643-21 / UL497B IEEE 802-3an	
Part number	560303	560201